

CC90 UNUM MOUNTING SYSTEM



# An easier, more profitable solar panel solution



SOLUTIONS FROM HOUSE ROOFS TO FACADES

# Better profitability and a safer solution for installers and property owners

**CC90 UNUM has been developed for easy, fast, and smooth installation of solar panels, with minimal impact on the roof structure.**

The system's rails and fasteners are made of composite, and several of the parts are assembled with a click function. This enables smoother, more sustainable installations – and better profitability for both the installers and the property owner.

## **From house roofs to facades**

We offer a wide range of solutions that suit villas, industries, agriculture, commercial properties and more. Our mounting system provides simple solutions for everything from roof tiles to special facades. See the schematic product guide on the next page for an overview of roof types and products.



# CC90 UNUM – with simplicity as a guiding principle

## With simplicity as a guiding principle comes profitability – but also safety and sustainability.

### Simplicity

Fewer, easier work steps

- ✓ The roof hook and the mounting rails are installed without tools. No post-processing of the roof tiles is necessary.
- ✓ Click installation provides an easy mounting system – regardless of the roof.



### Safety

A safe and sustainable system for both installers and property owners

- ✓ The roof structure remains intact, providing a tightly sealed, durable solution.
- ✓ Thanks to the composite, the installer also avoids hot work, metal shavings and sharp edges.



### Profitability

Profitable in both the short and long term

- ✓ Smooth click design saves time for the installer.
- ✓ Preserved roof structure is cost-effective for the property owner.
- ✓ Intelligent load optimization results in robust construction and long service life.



ROOF TYPES – CHOOSE PRODUCTS FOR YOUR ROOF TYPE

1

CONCRETE ROOF TILE  
2-barrel

2

CONCRETE ROOF TILE  
Flat

3

METAL ROOF  
TP/TRP

4

METAL ROOF  
Barrel

5

METAL ROOF  
Flat

Fixings in roofs and rails



Roof hook  
Round

1



CC90 mounting set  
Europapanna/Carisma

2



Mounting rail 4800  
mm with sealing strip

3 4



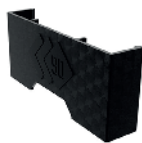
Universal bracket A

3\* 5

Products on rail are used for all roof types



Panel clamp



End plate



End cap



Multiholder



Optimiser bracket  
complete 13 mm



Rail joint

1 2 3 4 5 6 7 8

Accessories for certain roof types



Middle part  
10 mm

1 3\* 5



Accessories roof  
hook round complete

1



Hangerbolt

7



Bits TX20 1/4"  
length 70 mm

2

6

**STANDING SEAM**

*Single/Double/Click*

7

**FIBER CEMENT**

*Eternit*

8

**CARDBOARD ROOF**

*Cardboard/Bitumen*

9

**FACADE/SPECIAL\*\***



Standing seam bracket B

6



Hangerbolt + Universal bracket B complete

7



Universal bracket B complete + Attachment plate

8



Mounting rail 4800 mm



**Accessories for all roof types**



Allen bit 25 1/4", length 50 mm



Bits Torxplus IP30, length 25 mm



Installation screw CC90 UNUM Grey



Torque puller 8Nm



Disassembly tool



Grounding clip type 220492



Bits Insex 6 mm, 1/4", length 50 mm



Support foot



For detailed and complete information, use our configurator and assembly instructions at [www.cc90.se](http://www.cc90.se)

\* Special solution for Metal Roof TP/TRP, see installation instructions.

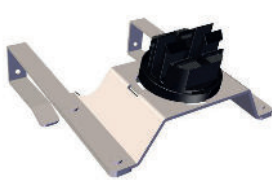
\*\* Facade/Special, please contact us.

PRODUCT DATA:

# CC90 UNUM mounting system for solar panels

For installation instructions, requirements and conditions, visit our website: [cc90.se](http://cc90.se).

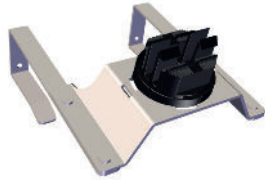
You'll find a simplified product guide with products and roof types on the previous page.



### Roof hook round for batten 25–28 mm

Roof hook for 2-barrel concrete tile, horizontal and vertical mounting of the mounting rail, for 25–28 mm support battens. Panel height is adjusted with: Middle part 10 mm. Clamping zone can be adjusted with: Accessories roof hook round complete.

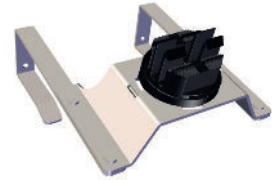
<b>Art.No</b> .....	2405011
<b>Width</b> .....	175 mm
<b>Height</b> .....	130 mm
<b>Length</b> .....	218 mm
<b>Material</b> .....	Glassfiber reinforced composite / Magnelis
<b>Weight</b> .....	765 g



### Roof hook round for batten 32 mm

Roof hook for 2-barrel concrete tile, horizontal and vertical mounting of the mounting rail, for 32 mm support battens. Panel height is adjusted with: Middle part 10 mm. Clamping zone can be adjusted with: Accessories roof hook round complete.

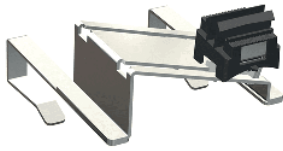
<b>Art.No</b> .....	2406006
<b>Width</b> .....	175 mm
<b>Height</b> .....	139 mm
<b>Length</b> .....	218 mm
<b>Material</b> .....	Glassfiber reinforced composite / Magnelis
<b>Weight</b> .....	770 g



### Roof hook round for batten 45 mm

Roof hook for 2-barrel concrete tile, horizontal and vertical mounting of the mounting rail, for 45 mm support battens. Panel height is adjusted with: Middle part 10 mm. Clamping zone can be adjusted with: Accessories roof hook round complete.

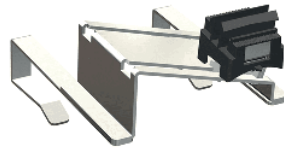
<b>Art.No</b> .....	2405012
<b>Width</b> .....	175 mm
<b>Height</b> .....	148 mm
<b>Length</b> .....	218 mm
<b>Material</b> .....	Glassfiber reinforced composite / Magnelis
<b>Weight</b> .....	780 g



**Roof hook adjustable  
for batten 25–28 mm**

Roof hook for 2-barrel concrete roof tile, horizontal installation of mounting rail, for 25–28 mm battens. Panel height and clamping zone can be adjusted.

**Art.No** ..... 2203001  
**Width** ..... 175 mm  
**Height** ..... 147 mm  
**Length** ..... 205 mm  
**Material** ..... Fiberglass reinforced composite / Magnelis  
**Weight** ..... 1001 g



**Roof hook adjustable  
for batten 45 mm**

Roof hook for 2-barrel concrete roof tile, horizontal installation of mounting rail, for 45 mm battens. Panel height and clamping zone can be adjusted.

**Art.No** ..... 2203002  
**Width** ..... 175 mm  
**Height** ..... 165 mm  
**Length** ..... 205 mm  
**Material** ..... Fiberglass reinforced composite/ Magnelis  
**Weight** ..... 1021 g



**CC90 mounting set  
Europanna/Carisma**

Roof hook for flat concrete roof tile type Europanna/Carisma, for installation on wooden suspended ceiling.

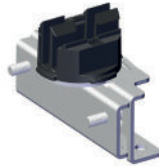
**Art.No** ..... 2409001  
**Width** ..... 89 mm  
**Height** ..... 156 mm  
**Length** ..... 420 mm  
**Material** ..... Fiberglass reinforced composite / Magnelis/ A2/ EPDM  
**Weight** ..... 1434 g



**Universal bracket A**

Used for mounting on flat and trapezoidal metal roofs, integrated seal. Adjustable in height with: Middle part 10 mm (2308013). Used with Mounting rail 4800 mm.

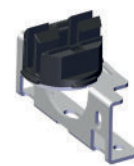
**Art.No** ..... 2405017  
**Width** ..... 70 mm  
**Height** ..... 55 mm  
**Length** ..... 105 mm  
**Material** ..... Fiberglass reinforced composite  
**Weight** ..... 93 g



**Standing seam bracket B**

Standing seam bracket B is used for single and double standing seam roofs as well as prefabricated roofs with click seam.

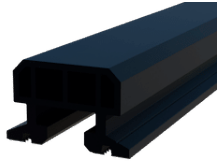
**Art.No** ..... 2405019  
**Width** ..... 65 mm  
**Height** ..... 92 mm  
**Length** ..... 138 mm  
**Material** ..... Fiberglass reinforced composite / Stainless Steel / Magnelis  
**Weight** ..... 557 g



**Universal bracket B complete**

Universal bracket B complete is used with attachment plate for bitumen roofs or together with a hangerbolt.

**Art.No** ..... 2405018  
**Width** ..... 65 mm  
**Height** ..... 92 mm  
**Length** ..... 130 mm  
**Material** ..... Fiberglass reinforced composite / Magnelis  
**Weight** ..... 308 g



### Mounting rail 4800 mm

Mounting rail 4800 mm. Installed by clicking onto the rail bracket.

**Art.No** ..... 2206001  
**Width** ..... 50 mm  
**Height** ..... 32 mm  
**Length** ..... 4800 mm  
**Material** ..... Fiberglass reinforced composite  
**Weight** ..... 2750 g



### Mounting rail 4800 mm with sealing strip

Mounting rail 4800 mm with sealing strip. Screws directly into the rail against the metal roof or metal wall.

**Art.No** ..... 2309001  
**Width** ..... 50 mm  
**Height** ..... 35 mm  
**Length** ..... 4800 mm  
**Material** ..... Fiberglass reinforced composite / sealing strip  
**Weight** ..... 3450 g



### Mounting rail 370 mm with sealing strip

Mounting rail 370 mm with sealing strip. Screws directly into the rail against the metal roof or metal wall.

**Art.No** ..... 2203013  
**Width** ..... 50 mm  
**Height** ..... 35 mm  
**Length** ..... 370 mm  
**Material** ..... Fiberglass reinforced composite / sealing strip  
**Weight** ..... 270 g



### Panel clamp 30–35 mm ground

Panel clamp for 30–35 mm panel profile with grounding plate, brackets for cabling.

**Art.No** ..... 2312006  
**Width** ..... 70 mm  
**Height** ..... 117 mm  
**Length** ..... 116 mm  
**Material** ..... Fiberglass reinforced composite/ Stainless steel  
**Weight** ..... 103 g



### Rail joint

Rail joint joins together mounting rails, by sliding into the end of mounting rail.

**Art.No** ..... 2111005  
**Width** ..... 16 mm  
**Height** ..... 24 mm  
**Length** ..... 140 mm  
**Material** ..... Fiberglass reinforced composite  
**Weight** ..... 20 g



### End cap

End cap is clicked onto the mounting rail at rail end.

**Art.No** ..... 2301001  
**Width** ..... 63 mm  
**Height** ..... 33 mm  
**Length** ..... 58 mm  
**Material** ..... Fiberglass reinforced composite  
**Weight** ..... 58 g



### End plate 30 mm

End plate for 30 mm panel height. Clicks onto the panel clamp at the end of the panel row.

**Art.No** ..... 2106009  
**Width** ..... 23 mm  
**Height** ..... 40 mm  
**Length** ..... 113 mm  
**Material** ..... Fiberglass reinforced composite  
**Weight** ..... 21 g



### End plate 35 mm

End plate for 35 mm panel height. Clicks onto the panel clamp at the end of the panel row.

**Art.No** ..... 1912006  
**Width** ..... 23 mm  
**Height** ..... 45 mm  
**Length** ..... 113 mm  
**Material** ..... Fiberglass reinforced composite  
**Weight** ..... 23 g



### Middle part 10 mm

Middle part 10 mm is used for height adjustment of roof hook round and Universal bracket A.

**Art.No** ..... 2308013  
**Round** ..... 69 mm  
**Height** ..... 15 mm  
**Length** ..... 69 mm  
**Material** ..... Fiberglass reinforced composite  
**Weight** ..... 18 g



### Multiholder

Cable holder with 4x2 brackets. Clicks onto the mounting rail.

**Art.No** ..... 1912008  
**Width** ..... 65 mm  
**Height** ..... 27 mm  
**Length** ..... 70 mm  
**Material** ..... Fiberglass reinforced composite  
**Weight** ..... 24 g



### Optimizer bracket complete

Optimizer bracket complete 13 mm is clicked onto the mounting rail, the optimizer is screwed in place with the attached screw and nut.

**Art.No** ..... 2309006  
**Width** ..... 65 mm  
**Height** ..... 33 mm  
**Length** ..... 70 mm  
**Material** ..... Fiberglass reinforced composite/ FZB  
**Weight** ..... 40 g



### Grounding clip type 220492

The clips are fixed directly to the panel frame, ensuring a reliable grounding connection.

**Art.No** ..... 2501001  
**Width** ..... 20 mm  
**Height** ..... 6 mm  
**Length** ..... 23 mm  
**Material** ..... Acier C67S  
**Weight** ..... 5 g



**Installation screw  
CC90 UNUM Grey**

Installation screw CC90-UNUM Grey is used according to the installation instructions.

<b>Art.No</b> .....	2105006
<b>Width</b> .....	4,5 mm
<b>Height</b> .....	4,5 mm
<b>Length</b> .....	22 mm
<b>Material</b> .....	Steel / Bimetall
<b>Weight</b> .....	3,3 g



**Bits RW 25 1/4", length 50mm**

Bits RW25 1/4", length 50mm, for Installation screw CC90 UNUM.

<b>Art.No</b> .....	2105005
<b>Width</b> .....	5 mm
<b>Height</b> .....	5 mm
<b>Length</b> .....	50 mm
<b>Material</b> .....	Steel
<b>Weight</b> .....	10 g



**Disassembly tool**

Tool for removing the mounting rail from the hooks of the roof hook.

<b>Art.No</b> .....	2106008
<b>Width</b> .....	85 mm
<b>Height</b> .....	22 mm
<b>Length</b> .....	165 mm
<b>Material</b> .....	Composite / Steel
<b>Weight</b> .....	64 g



**Bits Torxplus IP30,  
length 25 mm**

Bits Torx Plus IP30, 1/4", length 25 mm, for panel clamp.

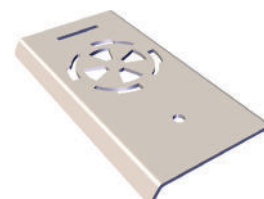
<b>Art.No</b> .....	2205002
<b>Width</b> .....	5 mm
<b>Height</b> .....	5 mm
<b>Length</b> .....	25 mm
<b>Material</b> .....	Steel
<b>Weight</b> .....	6 g



**Torque puller 8 Nm**

Torque puller 8 Nm provides the right torque when installing the panel clamp.

<b>Art.No</b> .....	2303002
<b>Width</b> .....	20 mm
<b>Height</b> .....	20 mm
<b>Length</b> .....	43 mm
<b>Material</b> .....	Steel
<b>Weight</b> .....	69 g



**Accessories roof hook  
round complete**

Accessories roof hook round complete is used for clamping zone adjustment of the Roof hook Round.

<b>Art.No</b> .....	2405020
<b>Width</b> .....	109 mm
<b>Height</b> .....	15 mm
<b>Length</b> .....	200 mm
<b>Material</b> .....	Magnelis
<b>Weight</b> .....	655 g



### Support foot

Foot for installation on Cardboard roofs. Adjustable between 60–90 mm, provides support for mounting rail.

**Art.No** ..... 2410015  
**Round** ..... 200 mm  
**Height** ..... 75 mm  
**Length** ..... 200 mm  
**Material** ..... Fiberglass reinforced composite/ FZB  
**Weight** ..... 277 g



### Bits TX20 1/4", length 70 mm

Bits TX20 1/4" length 70 mm for CC90 mounting set Europapanna/ Carisma.

**Art.No** ..... 2410004  
**Width** ..... 5 mm  
**Height** ..... 5 mm  
**Length** ..... 70 mm  
**Material** ..... Steel  
**Weight** ..... 12 g



### Allen but 6 mm, 1/4", length 50 mm

Bits Insex 6 mm, 1/4", length 50 mm for Standing seam bracket B and Universal bracket B complete.

**Art.No** ..... 2409008  
**Width** ..... 9 mm  
**Height** ..... 9 mm  
**Length** ..... 50 mm  
**Material** ..... Steel  
**Weight** ..... 12 g



### Hangerbolt M10x200 mm

Hangerbolt-M10x200 mm is used together with Universal bracket B complete for fiber cement / eternit roofs. Hangerbolt can be adjusted.

**Art.No** ..... 2402003  
**Width** ..... 10 mm  
**Height** ..... 10 mm  
**Length** ..... 200 mm  
**Material** ..... RF Steel A2 / EPDM  
**Weight** ..... 122 g



### Hangerbolt M10x250 mm

Hangerbolt-M10x250 mm is used together with Universal bracket B complete for fiber cement / eternit roofs. Hangerbolt can be adjusted.

**Art.No** ..... 2407001  
**Width** ..... 10 mm  
**Height** ..... 10 mm  
**Length** ..... 250 mm  
**Material** ..... RF Steel A2 / EPDM  
**Weight** ..... 148 g

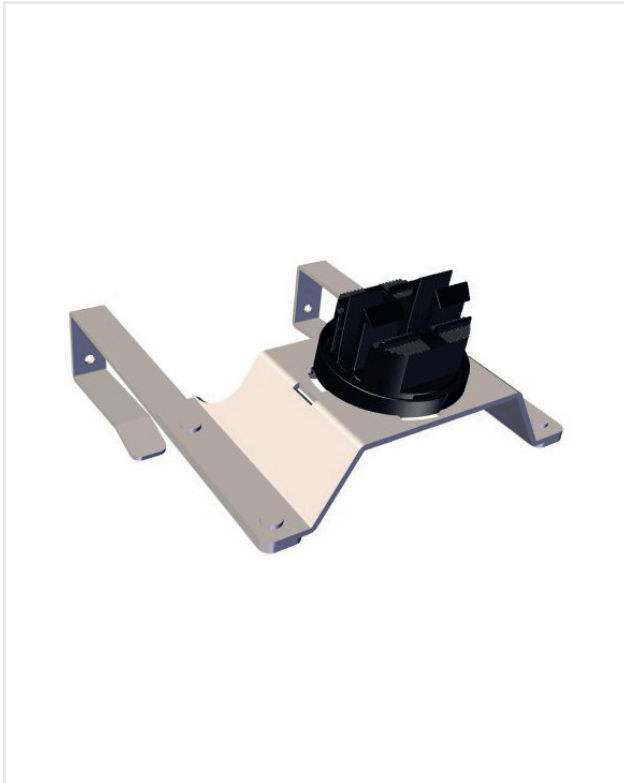


### Hangerbolt M10x300 mm

Hangerbolt-M10x300 mm is used together with Universal bracket B complete for fiber cement / eternit roofs. Hangerbolt can be adjusted.

**Art.No** ..... 2407002  
**Width** ..... 10 mm  
**Height** ..... 10 mm  
**Length** ..... 300 mm  
**Material** ..... RF Steel A2 / EPDM  
**Weight** ..... 167 g

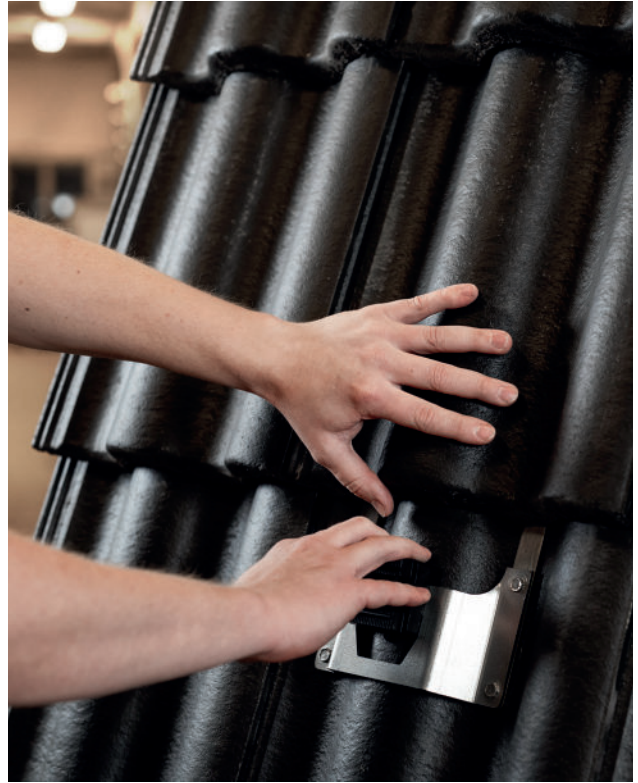
# Install the roof hook and the mounting rail without tools



---

Install the roof hook directly out of the box. For upright mounting rails, rotate the top of the rail bracket to the upright click position.

1



---

Slide the roof tile up, pull down the roof hook, and slide the roof tile back. No post-processing of roof tiles is needed.

2



---

Press the mounting rail  
in place with one click.

3

**NEW  
ROOF HOOKS**

- ✓ Install roof hook and mounting rail without tools
- ✓ Adjustable to fit your roof
- ✓ Adjustable to fit your panel

---

You have now installed the  
roof hook and mounting rail.

4

## Solar panels on facade – a perfect solution

Short on roof space? Or do you want to maximize your energy production? What many people don't know is that facade-mounted solar panels can produce just as much energy as roof installations, and often more.

A cold, sunny winter's day is – perhaps a little unexpectedly – a real dream situation for a solar cell system installed on the facade of a building. Facade panels work best with low sun, when the sun's rays can hit them straight on. Snow and other nearby buildings will reflect even more sunlight onto the panels, significantly increasing energy production.

We have completed several successful projects with solar panels on facades. Do you also want to maximize your energy production with a facade installation? Get in touch and we'll tell you more.

**SOLENERGI FUSEN AS  
PROJECT OSLO ASKO**





**ONECO ELECTRO AS  
PROJECT IN OSLO**





#### About CC90

We have a good level of knowledge of the solar energy industry, as well as a clear strategy and ambition for both the company's and the product portfolio's development in the European market. Our goal is to create simplicity and profitability for our customers.

**CC90 Construction**  
**Norrfors 25**  
**919 93 FREDRIKA**  
**Sweden**

**E-mail** [kundservice@cc90.se](mailto:kundservice@cc90.se)  
[www.cc90.se](http://www.cc90.se)