

CC90 UNUM MOUNTING SYSTEM



An easier, more profitable solar panel solution



SOLUTIONS FROM HOUSE ROOFS TO FACADES

Better profitability and a safer solution for installers and property owners

CC90 UNUM has been developed for easy, fast, and smooth installation of solar panels, with minimal impact on the roof structure.

The system's rails and fasteners are made of composite, and several of the parts are assembled with a click function. This enables smoother, more sustainable installations – and better profitability for both the installers and the property owner.

From house roofs to facades

We offer a wide range of solutions that suit villas, industries, agriculture, commercial properties and more. Our mounting system provides simple solutions for everything from roof tiles to special facades. See the schematic product guide on the next page for an overview of roof types and products.



CC90 UNUM – with simplicity as a guiding principle

With simplicity as a guiding principle comes profitability – but also safety and sustainability.

Simplicity

Fewer, easier work steps

- ✓ The roof hook and the mounting rails are installed without tools. No post-processing of the roof tiles is necessary.
- ✓ Click installation provides an easy mounting system – regardless of the roof.



Safety

A safe and sustainable system for both installers and property owners

- ✓ The roof structure remains intact, providing a tightly sealed, durable solution.
- ✓ Thanks to the composite, the installer also avoids hot work, metal shavings and sharp edges.



Profitability

Profitable in both the short and long term

- ✓ Smooth click design saves time for the installer.
- ✓ Preserved roof structure is cost-effective for the property owner.
- ✓ Intelligent load optimization results in robust construction and long service life.



1

CONCRETE ROOF TILE
2-barrel

2

CONCRETE ROOF TILE
Flat

3

METAL ROOF
TP/TRP

4

METAL ROOF
Barrel

5

METAL ROOF
Flat

6

STANDING SEAM
Single/Double/Click

7

FIBER CEMENT
Eternit

8

CARDBOARD ROOF
Cardboard/Bitumen

9

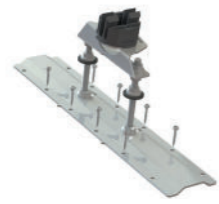
FACADE/SPECIAL**

Fixings in roofs and rails



Roof hook
Round

1



CC90 mounting set
Europanna/Carisma

2



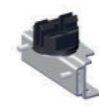
Mounting rail 4800
mm with sealing strip

3 4



Universal bracket A

3* 5



Standing seam
bracket B

6



Hangerbolt + Universal
bracket B complete

7



Universal bracket B complete
+ Attachment plate

8



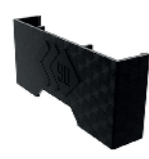
Mounting rail
4800 mm

1 2 3* 5
6 7 8

Products on rail are used for all roof types



Panel clamp



End plate



End cap



Multiholder



Optimiser bracket
complete 13 mm



Rail joint

1 2 3 4 5 6 7 8

Accessories for all roof types



Allen bit 25 1/4",
length 50 mm



Bits Torxplus
IP30, length
25 mm



Installation screw
CC90 UNUM Grey



Torque puller
8Nm



Disassembly
tool



Grounding clip
type 220492

1 2 3 4 5 6 7 8

Accessories for certain roof types



Middle part
10 mm

1 3* 5



Accessories roof
hook round complete

1



Hangerbolt

7



Bits TX20 1/4",
length 70 mm

2



Bits Insex 6 mm, 1/4",
length 50 mm

6 7 8



Support foot

8

For detailed and complete information,
use our configurator and assembly
instructions at www.cc90.se

* Special solution for Metal Roof TP/TRP,
see installation instructions.

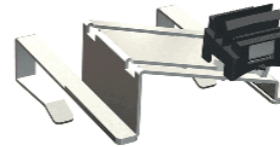
** Facade/Special, please contact us.

PRODUCT DATA:

CC90 UNUM mounting system for solar panels

For installation instructions, requirements and conditions, visit our website: cc90.se.

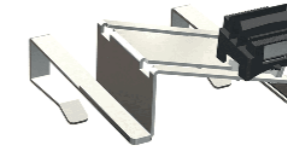
You'll find a simplified product guide with products and roof types on the previous page.



Roof hook adjustable for batten 25–28 mm

Roof hook for 2-barrel concrete roof tile, horizontal installation of mounting rail, for 25–28 mm battens. Panel height and clamping zone can be adjusted.

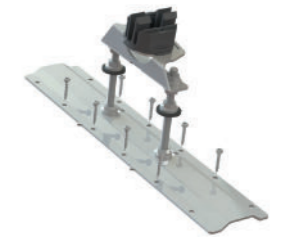
Art.No	2203001
Width	175 mm
Height	147 mm
Length	205 mm
Material	Fiberglass reinforced composite / Magnelis
Weight	1001 g



Roof hook adjustable for batten 45 mm

Roof hook for 2-barrel concrete roof tile, horizontal installation of mounting rail, for 45 mm battens. Panel height and clamping zone can be adjusted.

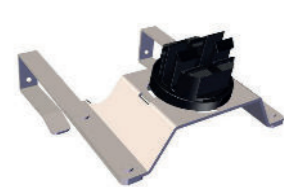
Art.No	2203002
Width	175 mm
Height	165 mm
Length	205 mm
Material	Fiberglass reinforced composite/ Magnelis
Weight	1021 g



CC90 mounting set Europapanna/Carisma

Roof hook for flat concrete roof tile type Europanna/Carisma, for installation on wooden suspended ceiling.

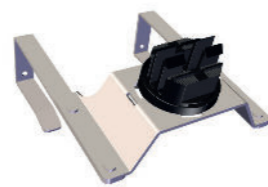
Art.No	2409001
Width	89 mm
Height	156 mm
Length	420 mm
Material	Fiberglass reinforced composite / Magnelis/ A2/ EPDM
Weight	1434 g



Roof hook round for batten 25–28 mm

Roof hook for 2-barrel concrete tile, horizontal and vertical mounting of the mounting rail, for 25–28 mm support battens. Panel height is adjusted with: Middle part 10 mm. Clamping zone can be adjusted with: Accessories roof hook round complete.

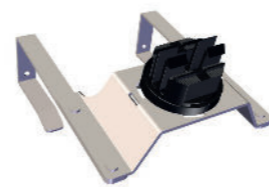
Art.No	2405011
Width	175 mm
Height	130 mm
Length	218 mm
Material	Glassfiber reinforced composite / Magnelis
Weight	765 g



Roof hook round for batten 32 mm

Roof hook for 2-barrel concrete tile, horizontal and vertical mounting of the mounting rail, for 32 mm support battens. Panel height is adjusted with: Middle part 10 mm. Clamping zone can be adjusted with: Accessories roof hook round complete.

Art.No	2406006
Width	175 mm
Height	139 mm
Length	218 mm
Material	Glassfiber reinforced composite / Magnelis
Weight	770 g



Roof hook round for batten 45 mm

Roof hook for 2-barrel concrete tile, horizontal and vertical mounting of the mounting rail, for 45 mm support battens. Panel height is adjusted with: Middle part 10 mm. Clamping zone can be adjusted with: Accessories roof hook round complete.

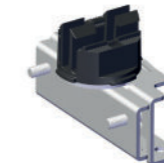
Art.No	2405012
Width	175 mm
Height	148 mm
Length	218 mm
Material	Glassfiber reinforced composite / Magnelis
Weight	780 g



Universal bracket A

Used for mounting on flat and trapezoidal metal roofs, integrated seal. Adjustable in height with: Middle part 10 mm (2308013). Used with Mounting rail 4800 mm.

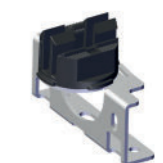
Art.No	2405017
Width	70 mm
Height	55 mm
Length	105 mm
Material	Fiberglass reinforced composite
Weight	93 g



Standing seam bracket B

Standing seam bracket B is used for single and double standing seam roofs as well as prefabricated roofs with click seam.

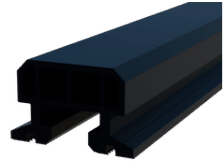
Art.No	2405019
Width	65 mm
Height	92 mm
Length	138 mm
Material	Fiberglass reinforced composite / Stainless Steel / Magnelis
Weight	557 g



Universal bracket B complete

Universal bracket B complete is used with attachment plate for bitumen roofs or together with a hangerbolt.

Art.No	2405018
Width	65 mm
Height	92 mm
Length	130 mm
Material	Fiberglass reinforced composite / Magnelis
Weight	308 g

**Mounting rail 4800 mm**

Mounting rail 4800 mm. Installed by clicking onto the rail bracket.

Art.No 2206001
Width 50 mm
Height 32 mm
Length 4800 mm
Material Fiberglass reinforced composite
Weight 2750 g

**Mounting rail 4800 mm with sealing strip**

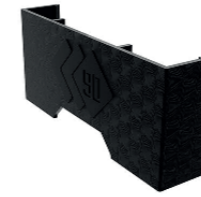
Mounting rail 4800 mm with sealing strip. Screws directly into the rail against the metal roof or metal wall.

Art.No 2309001
Width 50 mm
Height 35 mm
Length 4800 mm
Material Fiberglass reinforced composite / sealing strip
Weight 3450 g

**Mounting rail 370 mm with sealing strip**

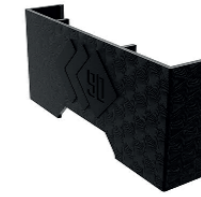
Mounting rail 370 mm with sealing strip. Screws directly into the rail against the metal roof or metal wall.

Art.No 2203013
Width 50 mm
Height 35 mm
Length 370 mm
Material Fiberglass reinforced composite / sealing strip
Weight 270 g

**End plate 30 mm**

End plate for 30 mm panel height. Clicks onto the panel clamp at the end of the panel row.

Art.No 2106009
Width 23 mm
Height 40 mm
Length 113 mm
Material Fiberglass reinforced composite
Weight 21 g

**End plate 35 mm**

End plate for 35 mm panel height. Clicks onto the panel clamp at the end of the panel row.

Art.No 1912006
Width 23 mm
Height 45 mm
Length 113 mm
Material Fiberglass reinforced composite
Weight 23 g

**Middle part 10 mm**

Middle part 10 mm is used for height adjustment of roof hook round and Universal bracket A.

Art.No 2308013
Round 69 mm
Height 15 mm
Length 69 mm
Material Fiberglass reinforced composite
Weight 18 g

**Panel clamp 30-35 mm ground**

Panel clamp for 30-35 mm panel profile with grounding plate, brackets for cabling.

Art.No 2312006
Width 70 mm
Height 117 mm
Length 116 mm
Material Fiberglass reinforced composite/ Stainless steel
Weight 103 g

**Rail joint**

Rail joint joins together mounting rails, by sliding into the end of mounting rail.

Art.No 2111005
Width 16 mm
Height 24 mm
Length 140 mm
Material Fiberglass reinforced composite
Weight 20 g

**End cap**

End cap is clicked onto the mounting rail at rail end.

Art.No 2301001
Width 63 mm
Height 33 mm
Length 58 mm
Material Fiberglass reinforced composite
Weight 58 g

**Multiholder**

Cable holder with 4x2 brackets. Clicks onto the mounting rail.

Art.No 1912008
Width 65 mm
Height 27 mm
Length 70 mm
Material Fiberglass reinforced composite
Weight 24 g

**Optimizer bracket complete**

Optimizer bracket complete 13 mm is clicked onto the mounting rail, the optimizer is screwed in place with the attached screw and nut.

Art.No 2309006
Width 65 mm
Height 33 mm
Length 70 mm
Material Fiberglass reinforced composite/ FZB
Weight 40 g

**Grounding clip type 220492**

The clips are fixed directly to the panel frame, ensuring a reliable grounding connection.

Art.No 2501001
Width 20 mm
Height 6 mm
Length 23 mm
Material Acier C67S
Weight 5 g



**Installation screw
CC90 UNUM Grey**

Installation screw CC90-UNUM Grey is used according to the installation instructions.

Art.No 2105006
Width 4,5 mm
Height 4,5 mm
Length 22 mm
Material Steel / Bimetal
Weight 3,3 g



Bits RW 25 1/4", length 50mm

Bits RW25 1/4", length 50mm, for Installation screw CC90 UNUM.

Art.No 2105005
Width 5 mm
Height 5 mm
Length 50 mm
Material Steel
Weight 10 g



Disassembly tool

Tool for removing the mounting rail from the hooks of the roof hook.

Art.No 2106008
Width 85 mm
Height 22 mm
Length 165 mm
Material Composite / Steel
Weight 64 g



Support foot

Foot for installation on Cardboard roofs. Adjustable between 60–90 mm, provides support for mounting rail.

Art.No 2410015
Round 200 mm
Height 75 mm
Length 200 mm
Material Fiberglass reinforced composite/ FZB
Weight 277 g



Bits TX20 1/4", length 70 mm

Bits TX20 1/4" length 70 mm for CC90 mounting set Europapanna/ Carisma.

Art.No 2410004
Width 5 mm
Height 5 mm
Length 70 mm
Material Steel
Weight 12 g



**Allen but 6 mm, 1/4",
length 50 mm**

Bits Insex 6 mm, 1/4", length 50 mm for Standing seam bracket B and Universal bracket B complete.

Art.No 2409008
Width 9 mm
Height 9 mm
Length 50 mm
Material Steel
Weight 12 g



**Bits Torxplus IP30,
length 25 mm**

Bits Torx Plus IP30, 1/4", length 25 mm, for panel clamp.

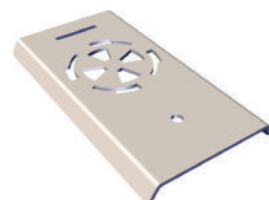
Art.No 2205002
Width 5 mm
Height 5 mm
Length 25 mm
Material Steel
Weight 6 g



Torque puller 8 Nm

Torque puller 8 Nm provides the right torque when installing the panel clamp.

Art.No 2303002
Width 20 mm
Height 20 mm
Length 43 mm
Material Steel
Weight 69 g



**Accessories roof hook
round complete**

Accessories roof hook round complete is used for clamping zone adjustment of the Roof hook Round.

Art.No 2405020
Width 109 mm
Height 15 mm
Length 200 mm
Material Magnelis
Weight 655 g



Hangerbolt M10x200 mm

Hangerbolt-M10x200 mm is used together with Universal bracket B complete for fiber cement / eternit roofs. Hangerbolt can be adjusted.

Art.No 2402003
Width 10 mm
Height 10 mm
Length 200 mm
Material RF Steel A2 / EPDM
Weight 122 g



Hangerbolt M10x250 mm

Hangerbolt-M10x250 mm is used together with Universal bracket B complete for fiber cement / eternit roofs. Hangerbolt can be adjusted.

Art.No 2407001
Width 10 mm
Height 10 mm
Length 250 mm
Material RF Steel A2 / EPDM
Weight 148 g

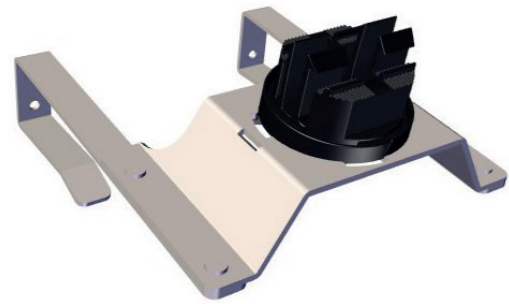


Hangerbolt M10x300 mm

Hangerbolt-M10x300 mm is used together with Universal bracket B complete for fiber cement / eternit roofs. Hangerbolt can be adjusted.

Art.No 2407002
Width 10 mm
Height 10 mm
Length 300 mm
Material RF Steel A2 / EPDM
Weight 167 g

Install the roof hook and the mounting rail without tools



Install the roof hook directly out of the box. For upright mounting rails, rotate the top of the rail bracket to the upright click position.

1



Slide the roof tile up, pull down the roof hook, and slide the roof tile back. No post-processing of roof tiles is needed.

2



Press the mounting rail in place with one click.

3



- ✓ Install roof hook and mounting rail without tools
- ✓ Adjustable to fit your roof
- ✓ Adjustable to fit your panel

You have now installed the roof hook and mounting rail.

4

Solar panels on facade – a perfect solution

Short on roof space? Or do you want to maximize your energy production? What many people don't know is that facade-mounted solar panels can produce just as much energy as roof installations, and often more.

A cold, sunny winter's day is – perhaps a little unexpectedly – a real dream situation for a solar cell system installed on the facade of a building. Facade panels work best with low sun, when the sun's rays can hit them straight on. Snow and other nearby buildings will reflect even more sunlight onto the panels, significantly increasing energy production.

We have completed several successful projects with solar panels on facades. Do you also want to maximize your energy production with a facade installation? Get in touch and we'll tell you more.



ONECO ELECTRO AS
PROJECT IN OSLO



SOLENERGI FUSEN AS
PROJECT OSLO ASKO





About CC90

We have a good level of knowledge of the solar energy industry, as well as a clear strategy and ambition for both the company's and the product portfolio's development in the European market. Our goal is to create simplicity and profitability for our customers.

CC90 Construction
Norrfors 25
919 93 FREDRIKA
Sweden

E-mail kundservice@cc90.se
www.cc90.se